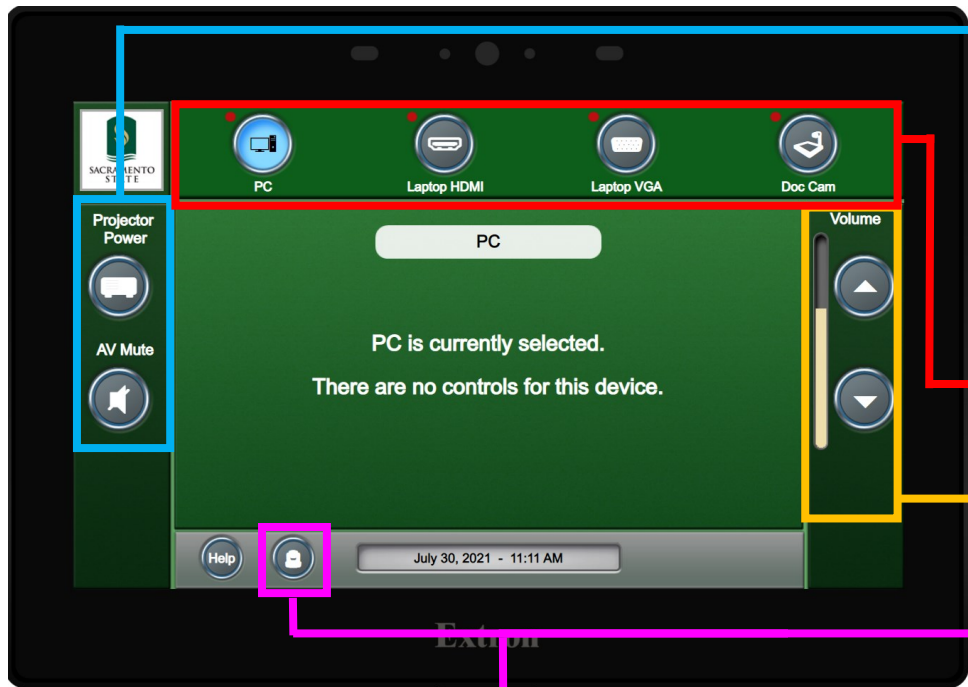


Classroom Instructions



- **Power projector:** Press once to turn on Projector. Press again to turn Projector off. A pop-up will appear to confirm shutdown.
- **Mute:** Audio/video mute button, press once to mute the video on the projector and the audio from the speakers, press again to unmute.

- **Inputs:** Selecting an input will switch to that source device.

- **Volume Up/Down:** Increases and decreases system audio.

- **Camera Presets:** This button will open a menu with camera presets to position the ceiling camera in the room.

- **Camera Preset 1:** This will provide a close-up of the podium.
- **Camera Preset 2:** This will provide a wider image including the podium and a portion of the whiteboard.
- **Camera Preset 3:** This will provide the widest image encompassing the full whiteboard/front of the class.

Note*: The camera will capture the projector screen if down.

