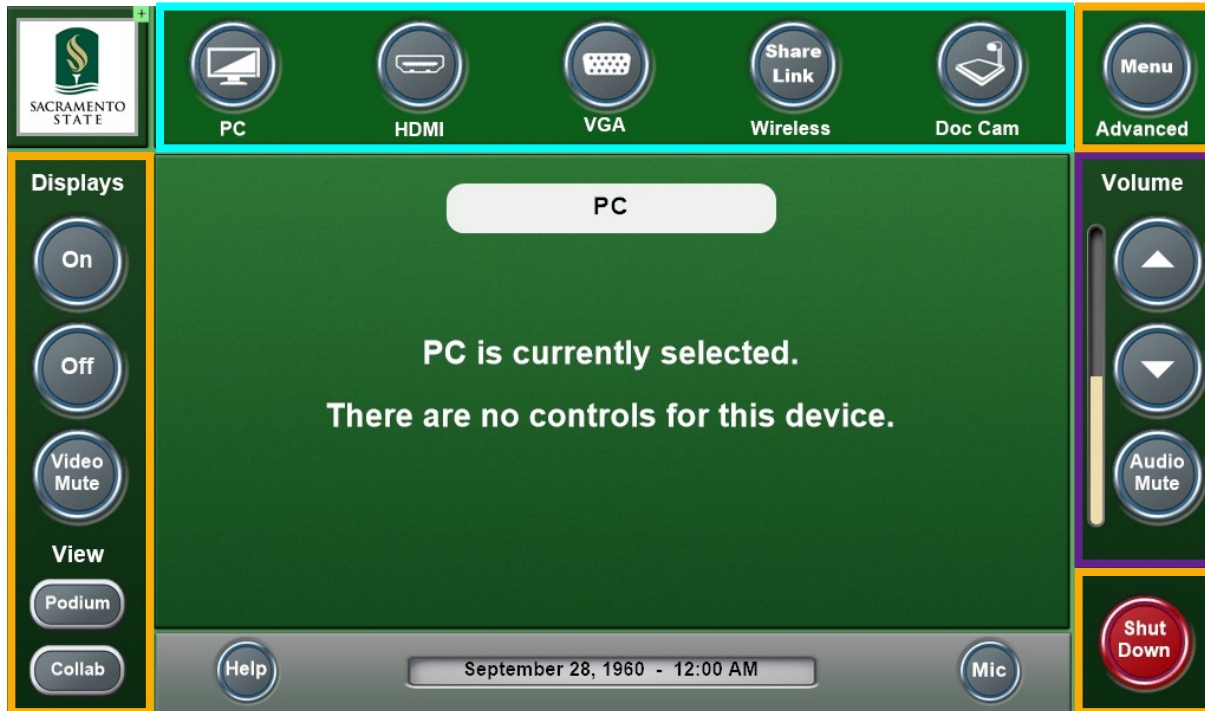


TSC 1002 ROOM AV CONTROLS

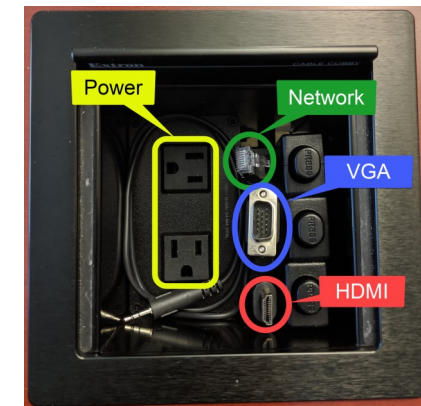


Display Controls on left and right (yellow box). Sources on top (blue box). Audio Controls on the right (purple box).

- Press the Displays **On** button. *Wait* for the displays to turn on.
- Press the source button you wish to use.
 - **PC**: PC in AV cabinet
 - **Laptop**: HDMI or VGA cord in the cable cubby
 - **Wireless**: ShareLink wireless display gateway: Connect your notebook or mobile device wirelessly - Instructions attached
 - **Doc Cam**: Document camera located in the ceiling above the carpet X

- Use the View controls to set *all* displays to **Podium** or **Collab** (Collaborative).
 - Press the **Advanced Menu** button to control individual displays.
- When finished, press the red **Shut Down** button.

LAPTOP CONNECTIONS

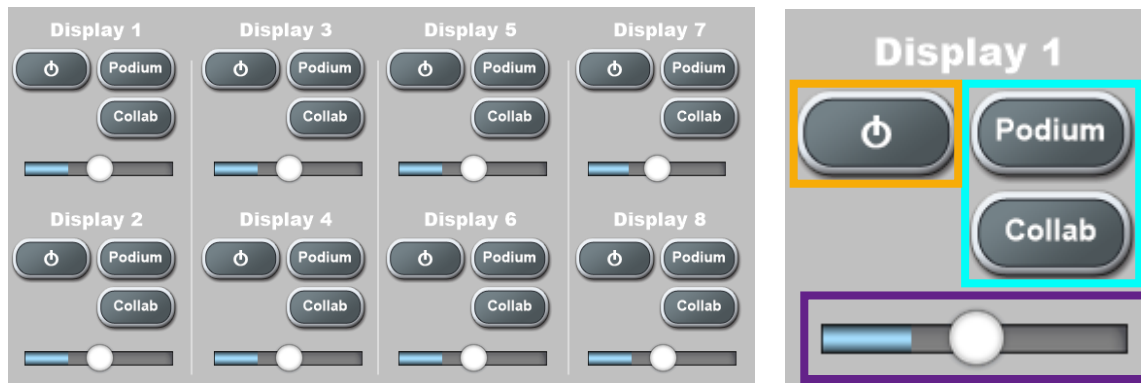


Laptop connections are in the cable cubby (Metal box in the AV cabinet directly under the control panel)

If the cable cubby lid is closed, it looks like a metal plate - lift to open it.

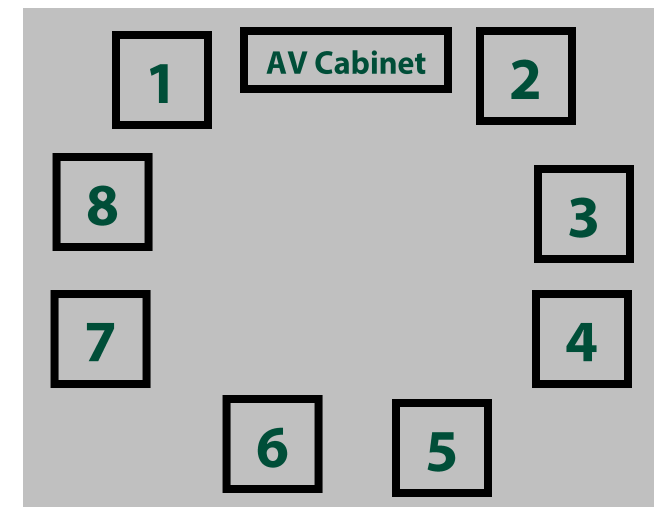
MORE TSC 1002 ROOM AV CONTROLS

ADVANCED MENU - INDIVIDUAL DISPLAY CONTROLS



- Press the **Advanced Menu** button to access individual monitor controls.
 - Each display has power controls to the top left (**yellow box**), source selection on the right column (**blue box**), and volume controls on the bottom (**purple box**).
 - Press the **Advanced Menu** or the red X to close the menu.

DISPLAY NUMBERING



Displays are numbered 1-8, starting to the left of the AV cabinet and going around the room clockwise.

MORE TSC 1002 ROOM AV CONTROLS

MICROPHONES

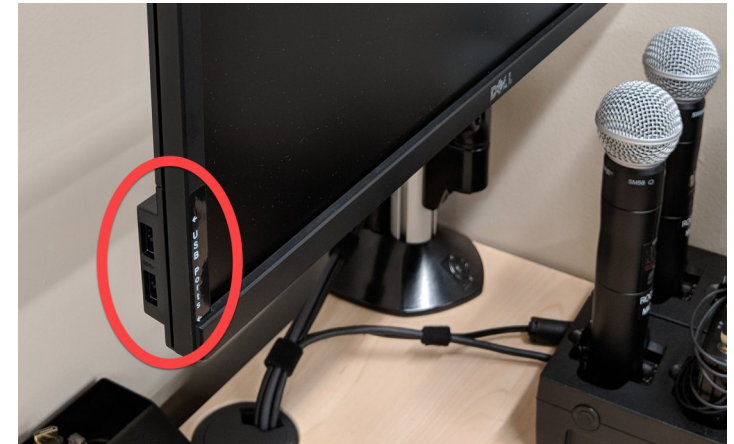


The room is equipped with 4 microphones:

- 1 bodypack
- 3 handheld

- Remove from charger and switch on to use.
 - Bodypack mics should be placed at the top of the chest, not on collar.
- Turn off, and place in charger when done. Make sure the charging light turns on when placing in charger.

PODIUM PC USB PORTS



The podium computer's USB Ports for flash drive or clickers are located on the bottom left side of the monitor.

TSC 1002 DOCUMENT CAMERA CONTROLS



Note: Document Camera takes up to 25 seconds to start.

- **Zoom:** Use the **+** to zoom in, **-** to zoom out.
- **Focus:** Use the **▲** to increase focus, **▼** to decrease focus. **Auto** will automatically focus.
- **Brightness:** Use the **▲** to increase brightness, **▼** to decrease brightness. **Auto** will balance the brightness automatically.



The black **X** on the carpet is the location of the camera.

DOCUMENT CAMERA REMOTE



The document camera can be controlled from the touchpanel or the remote.

Use the **Zoom +** button to zoom in, and the **Zoom -** to zoom out (**yellow boxes**).

TSC 1002 INDIVIDUAL DISPLAY AV CONTROLS

DISPLAY WALL CONTROLS



There are individual display controls under each display.

- **Display ON/OFF:** Turn the display on or off
- **Volume:** Raise or lower the display's volume
- **Podium:** The content being shared from the AV cabinet
- **ShareLink:** The ShareLink wireless display gateway OR physical HDMI cable coiled behind each display